



Product Catalog

QSP[®]

Quality Scientific Plastics



Asia: email: infoapac@qsptips.com

Latin America: email: infolamer@qsptips.com

Europe: Tel: 800.995.2787 | email: infoeu@qsptips.com

North America: Tel: 800.995.2787 | email: info@qsptips.com

www.qsptips.com

**Contact Information**

Thermo Fisher Scientific - QSP Brand
9389 Waples Street | San Diego, CA 92121-3903 USA
Asia: email: infoapac@qsptips.com
Latin America: email: infolamer@qsptips.com
Europe : Tel: 800.995.2787 | email: infoeu@qsptips.com
North America: Tel: 800.995.2787 | email: info@qsptips.com
www.qsptips.com

Table of Contents

Pipette Tips & Tubes Features and Benefits	page 4
Packaging Options	page 5
Standard Pipette Tips	page 8
Gel Loading Pipette Tips.....	page 16
Large Orifice Pipette Tips	page 18
Filter Pipette Tips	page 20
Filter Gel Loading Pipette Tips.....	page 26
Filter Large Orifice Pipette Tips.....	page 28
Automated Pipette Tips	page 30
Beckman®.....	page 31
Bio-Tek®	page 35
Caliper® Zymark®	page 35
Cetus™	page 36
Molecular Devices	page 36
PerkinElmer® / Packard®	page 39
Tecan®	page 41
Tomtec® / Apricot™	page 45
Qiagen® / Rosys™ / Colibri™	page 46
Velocity11™	page 47
Microcentrifuge and Microtiter Tubes	page 50
Graduated Microcentrifuge Tubes	page 51
Locking Lid Microcentrifuge Tubes	page 52
Screw Cap Conical Tubes and Caps	page 53
Screw Cap Free Standing Tubes and Caps	page 55
Screw Caps	page 57
Capless Graduated Tubes	page 58
Specialty Microcentrifuge Tubes	page 59
Microtiter Tubes and Strip Caps	page 60
PCR Tubes	page 62
Thin Wall PCR Tubes and Caps.....	page 63
Thin Wall Thermal Cycler Plate	page 65
Clinical Products	page 66
Transport Tubes.....	page 67
Culture Tubes	page 68
VersaClosure™	page 68
SAV-IT® Closure.....	page 69
Plug Closure, Flange Caps, and Filter Serum Caps.....	page 70

QSP Pipette Tips & Tubes Features and Benefits

QSP pipette tips and tubes are made from 100% virgin polypropylene utilizing state of the art molds and molding methods. These products are precision molded for an airtight fit without using a mold release agent in the manufacturing process.

Non sterile Pipette Tips, Tubes and Caps

are certified free of RNase/DNase, DNA and Pyrogen contamination and are autoclavable at a recommended temperature of 120 °C at 15 P.S.I. for 15 minutes.

Sterile Pipette Tips, Tubes and Caps

are certified free of RNase/DNase, DNA, Pyrogen, Endotoxin, ATP, Bioburden, and PCR Inhibitor contamination.

Autoclavable Pipette Tips and Racks

are autoclavable at a recommended temperature of 120 °C at 15 P.S.I. for 15 minutes.

Filter Pipette Tips

utilize a patented small micron filter designed specifically to prevent cross contamination.

Gel Loading Pipette Tips

are ideal for a wide variety of sample loading applications such as protein separation, nucleic acid sequencing, and other gel loading applications.

Graduated Pipette Tips

provide reference lines to allow for a quick volume check indicating nominal liquid in the tip.

Extra Long Pipette Tips

ensure maximum sampling with the extended length to reach the bottom of sample vessels and help prevent cross contamination.

Thin Wall MicroPoint Pipette Tips

improve small volume pipetting by reducing the liquid retained within the tip while increasing accuracy.

Large Orifice Pipette Tips

eliminate shearing of fragile cells and are ideal in pipetting small volumes of viscous materials.

Beveled Pipette Tips

reduce liquid retention at the distal orifice of the pipette tip by minimizing liquid build-up when dispensing fluids.

Robotic Pipette Tips

are manufactured with 100% virgin polypropylene. In addition, the racks are designed to endure the applied pressures of automated workstations.

Liquid Sensing Robotic Pipette Tips

are manufactured with carbon black conductive polypropylene, available with or without a filter, for automated liquid handling systems.



Packaging Options



Bagged

Our bagged (bulk) tips are the economical choice for those refilling empty racks. Bulk tips are packaged in a heavy duty, zip-top plastic bag. Unit and case quantities vary.



Individually Wrapped

Our individually wrapped sterile tips and sterile tubes are ideal for applications requiring strict aseptic conditions. Unit and case quantities vary.



96 Tip Rack

The 96 tip rack is the standard for racked pipette tips. Racks are in the standard 8 x 12 format, are compatible with single and multichannel pipettes, and are autoclavable. Each rack features a lift-off lid. Packaged 96 tips per rack, 10 racks per unit, and 5 units per case.



96 Tip Hinged Rack

The 96 tip hinged rack is the latest addition to the QSP product line. The new rack features single and multichannel pipette compatibility, a recycling logo on each plastic component, a reversible lid that can be used as hinged or lift-off, a locking lid to prevent tips from spilling if dropped, and removable inserts that make using the new QSP reload system easy. Packaged 96 tips per rack, 10 racks per unit, and 5 units per case.



100 Tip Rack

The 100 tip rack is designed to accommodate QSP's large volume and extra long tips. Packaged 100 tips per rack, 10 racks per unit, and 5 units per case.

Packaging Options

**100 Tip Hinged Rack**

The 100 tip hinged rack is designed to accommodate QSP's large volume tips. Packaged 100 tips per rack, 10 racks per unit, and 5 units per case.

**96 Tip Reload System**

The new QSP reload system is simple to use, reduces waste, and uses less space than traditional packaging. The reload system transfers one insert at a time to the new purple empty 96 tip hinged rack. Inserts are easily removed from the rack with one hand and a new insert is pushed into place with no tip alignment or transfer card required. All inserts have the volume, part number, and lot number printed for easy traceability. Packaged 96 tips per insert, 2 stacks of 5 inserts per unit, and 5 units per case.

**100 Tip Stack Rack System**

The 100 tip stack rack system is designed for 1 ml and larger volume tips. Stack racks are a convenient packaging format to purchase racked tips. Inserts can be placed into 1 ml blue hinged racks. Packaged 100 tips per insert, 10 inserts per unit, and 5 units per case.

**200 Tip Stack Rack System**

The 200 tip stack rack system is designed for 200 ul tips. Stack racks are a convenient packaging format for those that use a large number of racked tips. The 200 tip stack rack system features 200 tips in 5 inserts nested together with a strip of autoclave tape for sterility verification after autoclaving. Packaged 200 tips per insert, 5 stack racks per unit, and 5 units per case.

**204 Tip Rack**

The 204 tip rack is designed for extra long and gel loading tips. Each rack holds 204 tips arranged in a 12 x 17 configuration. Unit and case quantities vary.





QSP Standard Pipette Tips

Standard Pipette Tips 8

Gel Loading Pipette Tips page 16

Large Orifice Pipette Tips page 18

QSP Standard Pipette Tips

Volume: 0.1-10 µl Extended Length



Cat. No.	Color	Sterility	Package Type	Tips/Unit	Unit/CS
102	Natural	Non sterile	Bagged	1,000	10
T102R-Q	Natural	Non sterile	96 Tip Rack Hinged	960	5
T102RS-Q	Natural	Sterile	96 Tip Rack Hinged	960	5

Pipette Fit Information: Universal fit.

MicroPoint™ tip | Graduated at 2.5 µl | Extended Length tip | Purple rack

Volume: 0.1-10 µl Ultra Micro



Cat. No.	Color	Sterility	Package Type	Tips/Unit	Unit/CS
104-Q	Natural	Non sterile	Bagged	1,000	10
T104R-Q	Natural	Non sterile	96 Tip Rack Hinged	960	5
T104RS-Q	Natural	Sterile	96 Tip Rack Hinged	960	5
T104RL-Q	Natural	Non sterile	96 Tip Reload Inserts	960	5
T104RLS-Q	Natural	Sterile	96 Tip Reload Inserts	960	5

Pipette Fit Information: Universal fit.

MicroPoint tip | Graduated at 2 µl | Purple rack

Volume: 0.1-20 µl Ultra Micro



Cat. No.	Color	Sterility	Package Type	Tips/Unit	Unit/CS
114-Q	Natural	Non sterile	Bagged	1,000	10
T114R-Q	Natural	Non sterile	96 Tip Rack Hinged	960	5
T114RS-Q	Natural	Sterile	96 Tip Rack Hinged	960	5

Pipette Fit Information: Universal fit. Excellent fit on Eppendorf® pipettes.

MicroPoint Crystal tip | Purple rack

Volume: 1-200 µl Beveled



Natural	Yellow	Sterility	Package Type	Tips/Unit	Unit/CS
T110-BN-Q	T110-B-Q	Non sterile	Bagged	1,000	10
T110BRN-Q	T110BR-Q	Non sterile	96 Tip Rack Hinged	960	5
T110BRNS-Q	T110BRS-Q	Sterile	96 Tip Rack Hinged	960	5
T110BRLN-Q	T110BRL-Q	Non sterile	96 Tip Reload Inserts	960	5
T110BRLNS-Q	T110BRLS-Q	Sterile	96 Tip Reload Inserts	960	5
T110-RBN*	T110-RB*	Non sterile	200 Tip Stack Rack	1,000	10

Pipette Fit Information: Universal fit.

Beveled orifice tip | Hinged rack and reload stacks are purple | The 200 tip stack rack is blue

*Product is packaged with 5, 200 tip trays nested together with one sonically welded base and one lid.

Volume: 1-200 µl Thin Wall



Natural	Yellow	Sterility	Package Type	Tips/Unit	Unit/CS
TW110-N-Q	TW110	Non sterile	Bagged	1,000	10
TTW110RN-Q	TTW110R-Q	Non sterile	96 Tip Rack Hinged	960	5
TTW110RNS-Q	TTW110RS-Q	Sterile	96 Tip Rack Hinged	960	5
TTW110RLN-Q	TTW110RL-Q	Non sterile	96 Tip Reload Inserts	960	5
TTW110RLNS-Q	TTW110RLS-Q	Sterile	96 Tip Reload Inserts	960	5

Pipette Fit Information: Universal fit.

MicroPoint tip | Thin wall orifice | Purple rack

Volume: 1-200 µl Extra Long

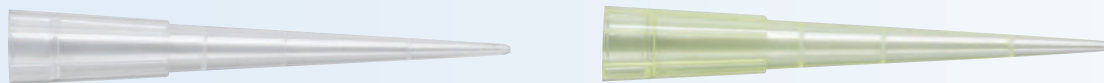


Cat. No.	Color	Sterility	Package Type	Tips/Unit	Unit/CS
T110-NXL	Natural	Non sterile	Bagged	1,000	5
T110NXLR-Q	Natural	Non sterile	96 Tip Rack Hinged	960	5
T110NXLRS-Q	Natural	Sterile	96 Tip Rack Hinged	960	5

Pipette Fit Information: Universal fit.

Extra long tip | Tip length is 3.58 inches (9.09 cm) | Purple rack

Volume: 1-200 μ l Graduated



Natural	Yellow	Sterility	Package Type	Tips/Unit	Unit/CS
113-GN-Q	113-G-Q	Non sterile	Bagged	1,000	10
T113RN-Q	T113R-Q	Non sterile	96 Tip Rack Hinged	960	5
T113RNS-Q	T113RS-Q	Sterile	96 Tip Rack Hinged	960	5
T113RLN-Q	T113RL-Q	Non sterile	96 Tip Reload Inserts	960	5
T113RLNS-Q	T113RLS-Q	Sterile	96 Tip Reload Inserts	960	5
113-RGN*	113-RG*	Non sterile	200 Tip Stack Rack	1,000	10

Pipette Fit Information: Universal fit.

Beveled orifice tip | Graduated at 10, 50, and 100 μ l | Hinged rack and reload stacks are purple | The 200 tip stack rack is blue

*Product is packaged with 5, 200 tip trays nested together with one sonically welded base and one lid.

Volume: 5-250 μ l



Cat. No.	Color	Sterility	Package Type	Tips/Unit	Unit/CS
117-N	Natural	Non sterile	Bagged	1,000	10
117-96RN	Natural	Non sterile	96 Tip Rack	960	5
117-96RNS	Natural	Sterile	96 Tip Rack	960	5

Pipette Fit Information: Universal fit. Excellent fit on Biohit Proline® pipettes.

Lift-off cover | Blue rack

Volume: 5-300 μ l Beveled



Cat. No.	Color	Sterility	Package Type	Tips/Unit	Unit/CS
106-Q	Natural	Non sterile	Bagged	1,000	10
T106R-Q	Natural	Non sterile	96 Tip Rack	960	5
T106RS-Q	Natural	Sterile	96 Tip Rack	960	5
T106RL-Q	Natural	Non sterile	96 Tip Reload Inserts	960	5
T106RLS-Q	Natural	Sterile	96 Tip Reload Inserts	960	5

Pipette Fit Information: Universal fit.

Beveled orifice tip | Purple rack

Volume: 1-300 μ l

Cat. No.	Color	Sterility	Package Type	Tips/Unit	Unit/CS
108-G-Q	Natural	Non sterile	Bagged	1,000	10
T108R-Q	Natural	Non sterile	96 Tip Rack Hinged	960	5
T108RS-Q	Natural	Sterile	96 Tip Rack Hinged	960	5

Pipette Fit Information: Universal fit.

Beveled orifice tip | Graduated at 10, 50, 100, and 200 μ l | Purple rack

Volume: 100-1000 μ l

Cat. No.	Color	Sterility	Package Type	Tips/Unit	Unit/CS
100	Natural	Non sterile	Bagged	500	10

Pipette Fit Information: Excellent fit on Biopet and Selectapette pipettes.

Volume: 100-1000 μ l

Natural	Blue	Sterility	Package Type	Tips/Unit	Unit/CS
111-N-Q	111-Q	Non sterile	Bagged	1,000	10
H-111-R100N	H-111-R100	Non sterile	100 Tip Rack Hinged	1,000	5
H-111-R100NS	H-111-R100S	Sterile	100 Tip Rack Hinged	1,000	5
111-RN	111-R	Non sterile	100 Tip Stack Rack	1,000	5
NA	111-S	Sterile	Individually Wrapped	500	10

Pipette Fit Information: Universal fit.

Blue 100 tip hinged rack

Volume: 100-1000 µl

Cat. No.	Color	Sterility	Package Type	Tips/Unit	Unit/CS
116-N	Natural	Non sterile	Bagged	1,000	10
116-R100N	Natural	Non sterile	100 Tip Rack	1,000	5
116-R100NS	Natural	Sterile	100 Tip Rack	1,000	5

Pipette Fit Information: Universal fit. Excellent fit on Eppendorf and Biohit pipettes.

Lift-off cover | Blue Rack

Volume: 50-1200 µl

Cat. No.	Color	Sterility	Package Type	Tips/Unit	Unit/CS
129	Natural	Non sterile	Bagged	1,000	10
129-96R	Natural	Non sterile	96 Tip Rack	960	5
129-96RS	Natural	Sterile	96 Tip Rack	960	5

Pipette Fit Information: Universal fit. Excellent fit on Biohit Proline pipettes.

Lift-off cover | Blue Rack

Volume: 100-1250 µl Extra Long

Natural	Blue	Sterility	Package Type	Tips/Unit	Unit/CS
112NXL	112XL	Non sterile	Bagged	1,000	10
T112NXLR-Q	T112XLR-Q	Non sterile	96 Tip Hinged Rack	960	5
T112NXLR-S-Q	T112XLR-S-Q	Sterile	96 Tip Hinged Rack	960	5
T112NXLR-L-Q	T112XLR-L-Q	Non sterile	96 Tip Reload Inserts	960	5
T112NXLR-L-S-Q	T112XLR-L-S-Q	Sterile	96 Tip Reload Inserts	960	5

Pipette Fit Information: Universal fit.

Extended length micropoint tip | Graduated at 100, 200, 500, 1000 ul. | Purple rack

Volume: 100-1250 µl

Cat. No.	Color	Sterility	Package Type	Tips/Unit	Unit/CS
122	Natural	Non sterile	Bagged	1,000	10
122-96R	Natural	Non sterile	96 Tip Rack	960	5
122-96RS	Natural	Sterile	96 Tip Rack	960	5

Pipette Fit Information: Excellent fit on Thermo Scientific Matrix pipettes

Lift-off cover | Blue Rack

Volume: 50-1500 µl

Cat. No.	Color	Sterility	Package Type	Tips/Unit	Unit/CS
127	Natural	Non sterile	Bagged	1,000	10
127-96R	Natural	Non sterile	96 Tip Rack	960	5
127-96RS	Natural	Sterile	96 Tip Rack	960	5

Pipette Fit Information: Excellent fit on Titertek® Multi-Stepper pipettes.

Lift-off cover | Blue Rack

Volume: 250-2500 µl

Cat. No.	Color	Sterility	Package Type	Tips/Unit	Unit/CS
085	Natural	Non sterile	Bagged	500	10

Pipette Fit Information: Universal fit. Excellent fit on Rainin EDP2 and Plus™.

Volume: 500-2500 μ l

Cat. No.	Color	Sterility	Package Type	Tips/Unit	Unit/CS
089	Natural	Non sterile	Bagged	500	5

Pipette Fit Information: Universal fit. Excellent fit on Eppendorf® and Biohit pipettes.

Volume: 1000-5000 μ l

Cat. No.	Color	Sterility	Package Type	Tips/Unit	Unit/CS
096-Q	Natural	Non sterile	Bagged	250	10

Pipette Fit Information: Universal fit. Excellent fit on Biohit Proline pipettes.

Volume: 1000-5000 μ l

Cat. No.	Color	Sterility	Package Type	Tips/Unit	Unit/CS
090-Q	Natural	Non sterile	Bagged	250	10

Pipette Fit Information: Universal fit.

Volume: 1000-5000 μ l

Cat. No.	Color	Sterility	Package Type	Tips/Unit	Unit/CS
095-Q	Natural	Non sterile	Bagged	250	10

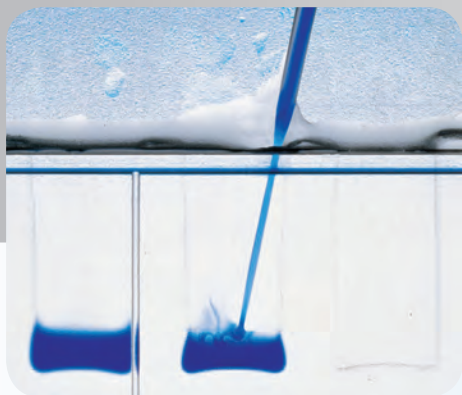
Pipette Fit Information: Universal fit. Excellent fit on Thermo Scientific Finnpiptette pipettes.

Volume: 1000-10000 μ l

Cat. No.	Color	Sterility	Package Type	Tips/Unit	Unit/CS
097	Natural	Non sterile	Bagged	200	10

Pipette Fit Information: Universal fit.

Graduated at 1000 μ l intervals

Gel Loading Pipette Tips

Loading acrylamide or agarose gels with standard pipette tips is a lengthy and tedious process. Choose from our standard round Gel Loading pipette tips for agarose gels and our specialized Ultra Round Gel pipette tips for your polyacrylamide gels.

Volume: 0.1-10 μ l Gel Loading

Cat. No.	Color	Sterility	Package Type	Tips/Unit	Unit/CS
103	Natural	Non sterile	Bagged	1,000	10
103-R204	Natural	Non sterile	204 Tip Rack	1,020	5
103-R204S	Natural	Sterile	204 Tip Rack	1,020	5

Pipette Fit Information: Universal fit.

Micropoint gel loading tips | Blue Rack | Lift-off cover | Ideal for loading Agarose, 2-D and SDS PAGE (Protein gels) | Approximate inner orifice diameter is 0.012 inches (0.31 mm) | Approximate outer orifice diameter is 0.023 inches (0.58 mm) | For loading gels 0.6 mm thick and thinner

Volume: 0.5-10 µl Gel Loading

Cat. No.	Color	Sterility	Package Type	Tips/Unit	Unit/CS
123-R204	Natural	Non sterile	204 Tip Rack	1,632	3
123-R204S	Natural	Sterile	204 Tip Rack	1,632	3

Pipette Fit Information: Universal fit. Excellent fit on Eppendorf pipettes.

Micropoint gel loading tips | Blue rack | Lift-off cover | Ideal for loading Agarose, 2-D and SDS PAGE (Protein gels) | Approximate inner orifice diameter is 0.012 inches (0.31 mm) | Approximate outer orifice diameter is 0.023 inches (0.58 mm) | For loading gels 0.6 mm thick and thinner

Volume: 0.5-10 µl Gel Loading

Cat. No.	Color	Sterility	Package Type	Tips/Unit	Unit/CS
124-R204	Natural	Non sterile	204 Tip Rack	1,020	10
124-R204S	Natural	Sterile	204 Tip Rack	1,020	10

Pipette Fit Information: Universal fit. Excellent fit on Eppendorf pipettes.

Micropoint gel loading tip | Blue rack | Lift-off cover | Well suited for capillary systems | Approximate inner orifice diameter is 0.005 inches (0.13 mm) | Approximate outer orifice diameter is 0.010 inches (0.25 mm) | For loading gels 0.4 mm thick and thinner

Volume: 1-200 µl Gel Loading

Cat. No.	Color	Sterility	Package Type	Tips/Unit	Unit/CS
010-Q	Natural	Non sterile	Bagged	1,000	10
T010R-Q	Natural	Non sterile	96 Tip Rack Hinged	960	5
T010RS-Q	Natural	Sterile	96 Tip Rack Hinged	960	5

Pipette Fit Information: Universal fit.

Gel loading tip | Purple rack | Ideal for loading Agarose, 2-D and SDS PAGE (Protein gels) | Approximate inner orifice diameter is 0.012 inches (0.31 mm) | Approximate outer orifice diameter is 0.023 inches (0.58 mm) | For loading gels 0.6 mm thick and thinner

Large Orifice Pipette Tips



When working with viscous liquids such as tween, glycerol, thick cell lysates, or thick tissue homogenates, pipetting problems may arise in the ability to draw or dispense fluid in a uniform fashion. The QSP Large Orifice pipette tips distal-end orifice is nearly 70 percent larger than that of standard pipette tips, which provide the flexibility required to work with difficult-to-handle fluids. In addition, these pipette tips are ideal for working with fragile cell lines to prevent shearing cells as they are aspirated and dispensed.

Volume: 1-200 μ l Large Orifice



Cat. No.	Color	Sterility	Package Type	Tips/Unit	Unit/CS
T118-N	Natural	Non sterile	Bagged	1,000	10
T118R-Q	Natural	Non sterile	96 Tip Rack Hinged	960	5
T118RS-Q	Natural	Sterile	96 Tip Rack Hinged	960	5

Pipette Fit Information: Universal fit.

Large orifice tip | Purple rack | Low Adhesion | Tip orifice inside diameter is 0.059 inches (1.50 mm)

Volume: 100-1250 μ l Large Orifice



Cat. No.	Color	Sterility	Package Type	Tips/Unit	Unit/CS
T112NXLG	Natural	Non sterile	Bagged	1,000	10
T112NXLGR-Q	Natural	Non sterile	96 Tip Rack Hinged	960	5
T112NXLGRS-Q	Natural	Sterile	96 Tip Rack Hinged	960	5

Pipette Fit Information: Universal fit.

Large orifice tip | Purple rack | Extended length | Low Adhesion | Tip orifice inside diameter is 0.059 inches (1.50 mm) | Graduated at 100, 200, 500, 1000 μ l

Standard Pipette Tips

Large Orifice



QSP Filtered Pipette Tips

Filter Pipette Tips..... 20

Filter Gel Loading Pipette Tips.....page 26

Filter Large Orifice Pipette Tipspage 28

QSP Filtered Pipette Tips

QSP racked sterile filter tips are shrink wrapped and certified free of RNase/DNase, DNA, Pyrogen, Endotoxin, ATP, Bioburden, and PCR inhibitors. QSP filters utilize a patented small micron filter technology assisting in the prevention of aerosol contamination.

Volume: 0.1-10 μ l Filtered Extended Length



Cat. No.	Color	Sterility	Package Type	Tips/Unit	Unit/CS
TF102-10-Q	Natural	Sterile	96 Tip Rack Hinged	960	5

Pipette Fit Information: Universal fit.

Graduated at 2.5 μ l | MicroPoint | Purple rack

Volume: 0.1-10 μ l Filtered Ultra Micro



Cat. No.	Color	Sterility	Package Type	Tips/Unit	Unit/CS
TF104-10-Q	Natural	Sterile	96 Tip Rack Hinged	960	5
F104-S-10	Natural	Sterile	Individually Wrapped	100	10

Pipette Fit Information: Universal fit.

Graduated at 2 μ l | MicroPoint | Purple rack

Volume: 0.1-10 μ l Filtered Ultra Micro



Cat. No.	Color	Sterility	Package Type	Tips/Unit	Unit/CS
TF114-10-Q	Natural	Sterile	96 Tip Rack Hinged	960	5

Pipette Fit Information: Universal fit. Excellent fit on Eppendorf pipettes.

MicroPoint Crystal Tip | Purple rack

Volume: 0.1-20 µl Filtered Ultra Micro

Cat. No.	Color	Sterility	Package Type	Tips/Unit	Unit/CS
TF114-20-Q	Natural	Sterile	96 Tip Rack Hinged	960	5

Pipette Fit Information: Universal fit. Excellent fit on Eppendorf pipettes.

MicroPoint Crystal Tip | Purple rack

Volume: 2-20 µl Filtered Beveled

Cat. No.	Color	Sterility	Package Type	Tips/Unit	Unit/CS
TF113-20-Q	Natural	Sterile	96 Tip Rack Hinged	960	5

Pipette Fit Information: Universal fit.

Beveled orifice tip | Purple rack

Volume: 10-100 µl Filtered Beveled

Cat. No.	Color	Sterility	Package Type	Tips/Unit	Unit/CS
TF113-100-Q	Natural	Sterile	96 Tip Rack Hinged	960	5

Pipette Fit Information: Universal fit.

Beveled orifice tip | Purple rack

Volume: 5-100 µl Filtered

Cat. No.	Color	Sterility	Package Type	Tips/Unit	Unit/CS
F117-96RNS-100	Natural	Sterile	96 Tip Rack	960	5

Pipette Fit Information: Universal Fit. Excellent fit on Biohit pipettes.

Lift-off cover | Blue rack

Volume: 20-200 μ l Filtered Graduated

Cat. No.	Color	Sterility	Package Type	Tips/Unit	Unit/CS
TF108-200	Natural	Sterile	96 Tip Rack Hinged	960	5
F108-S-200	Natural	Sterile	Individually Wrapped	100	10

Pipette Fit Information: Universal fit.

Beveled orifice tip | Graduated at 10, 50, 100 and 200 μ l | Purple rack

Volume: 20-200 μ l Filtered

Cat. No.	Color	Sterility	Package Type	Tips/Unit	Unit/CS
TF140-200-Q	Natural	Sterile	96 Tip Rack Hinged	960	5

Pipette Fit Information: Universal fit.

Graduated at 50, 100, and 200 μ l | Purple rack

Volume: 20-200 μ l Filtered Extended Length

Cat. No.	Color	Sterility	Package Type	Tips/Unit	Unit/CS
TF110NXL-200	Natural	Sterile	96 Tip Rack Hinged	960	5

Pipette Fit Information: Universal fit.

Extended length | Approximate tip length is 3.58 inches (9.09 cm) | Purple Rack

Volume: 20-200 μ l Filtered

Cat. No.	Color	Sterility	Package Type	Tips/Unit	Unit/CS
F117-96RNS-200	Natural	Sterile	96 Tip Rack	960	5

Pipette Fit Information: Excellent fit on Biohit pipettes.

Lift-off cover | Blue rack

For comprehensive pipette tip fit information, contact your local dealer.

Volume: 50-300 µl Filtered

Cat. No.	Color	Sterility	Package Type	Tips/Unit	Unit/CS
F117-96RS-300	Natural	Sterile	96 Tip Rack	960	5

Pipette Fit Information: Excellent fit on Biohit pipettes.

Lift-off cover | Blue rack

Volume: 50-300 µl Filtered

Cat. No.	Color	Sterility	Package Type	Tips/Unit	Unit/CS
F109-96RS-300	Natural	Sterile	96 Tip Rack	960	5

Pipette Fit Information: Universal fit.

Lift-off cover | Blue rack

Volume: 100-1000 µl Filtered Extra Long

Cat. No.	Color	Sterility	Package Type	Tips/Unit	Unit/CS
F116-R100S-1000	Natural	Sterile	96 Tip Rack	1,000	5

Pipette Fit Information: Universal fit. Excellent fit on Eppendorf® and Biohit pipettes.

Extra long tip | Approximate tip length is 3.48 inches (8.84 cm)

Volume: 100-1000 µl Filtered Extended Length

Cat. No.	Color	Sterility	Package Type	Tips/Unit	Unit/CS
TF112-1000-Q	Natural	Sterile	96 Tip Rack Hinged	960	5
F112-S-1000	Natural	Sterile	Individually Wrapped	100	10

Pipette Fit Information: Universal fit.

Extended length | Graduated at 100, 200, 500 and 1000 µl | Purple rack

Volume: 50-1200 μ l Filtered

Cat. No.	Color	Sterility	Package Type	Tips/Unit	Unit/CS
F129-96RS-1200	Natural	Sterile	96 Tip Rack	960	5

Pipette Fit Information: Excellent fit on Biohit Proline® Pipettes.

Lift-off covers | Blue rack

Volume: 100-1250 μ l Filtered

Cat. No.	Color	Sterility	Package Type	Tips/Unit	Unit/CS
F122-96RS-1250	Natural	Sterile	96 Tip Rack	960	5

Pipette Fit Information: Excellent fit on Matrix® pipettes.

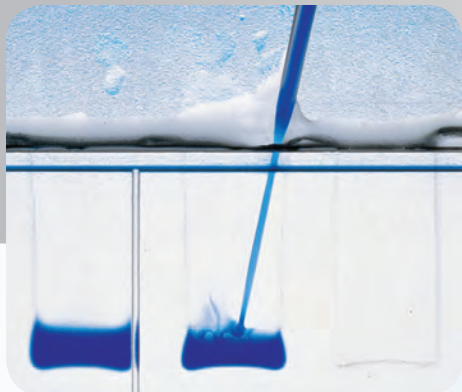
Lift-off cover | Blue rack

Volume: 1000-5000 μ l Filtered

Cat. No.	Color	Sterility	Package Type	Tips/Unit	Unit/CS
F090-100S-5000	Natural	Sterile	Bagged	100	10

Pipette Fit Information: Universal fit.

Gel Loading Pipette Tips



Loading acrylamide or agarose gels with standard pipette tips is a lengthy and tedious process. Choose from our standard round Gel Loading pipette tips for agarose gels and our specialized Ultra Round Gel pipette tips for your polyacrylamide gels.

Volume: 0.5-10 μ l Filtered Gel Loading



Cat. No.	Color	Sterility	Package Type	Tips/Unit	Unit/CS
F103-R204S-10	Natural	Sterile	204 Tip Rack	1,020	5

Pipette Fit Information: Universal fit.

Micropoint gel loading tip | Blue racks, lift-off cover. Ideal for loading Agarose, 2-D and SDS PAGE (Protein gels) | Approximate inner orifice diameter is 0.012 inches (0.31 mm) | Approximate outer orifice diameter is 0.023 inches (0.58 mm) | For loading gels 0.6 mm thick and thinner

Volume: 2-20 μ l Filtered Gel Loading



Cat. No.	Color	Sterility	Package Type	Tips/Unit	Unit/CS
TF010-20-Q	Natural	Sterile	96 Tip Rack Hinged	960	5

Pipette Fit Information: Universal fit.

Micropoint gel loading tip | Purple rack | Ideal for loading Agarose, 2-D and SDS PAGE (Protein gels) | Approximate inner orifice diameter is 0.012 inches (0.31 mm) | Approximate outer orifice diameter is 0.023 inches (0.58 mm) | For loading gels 0.6 mm thick and thinner

Volume: 10-100 μ l Filtered Gel Loading



Cat. No.	Color	Sterility	Package Type	Tips/Unit	Unit/CS
TF010-100-Q	Natural	Sterile	96 Tip Hinged Rack	960	5

Pipette Fit Information: Universal fit.

Micropoint gel loading tip | Purple rack. Ideal for loading Agarose, 2-D and SDS PAGE (Protein gels) | Approximate inner orifice diameter is 0.012 inches (0.31 mm) | Approximate outer orifice diameter is 0.023 inches (0.58 mm) | For loading gels 0.6 mm thick and thinner

Large Orifice Pipette Tips



When working with viscous liquids such as tween, glycerol, thick cell lysates, or thick tissue homogenates, pipetting problems may arise in the ability to draw or dispense fluid in a uniform fashion. The QSP Large Orifice pipette tips distal-end orifice is nearly 70 percent larger than that of standard pipette tips, which provide the flexibility required to work with difficult-to-handle fluids. In addition, these pipette tips are ideal for working with fragile cell lines to prevent shearing cells as they are aspirated and dispensed.

Volume: 20-200 µl Filtered Large Orifice



Cat. No.	Color	Sterility	Package Type	Tips/Unit	Unit/CS
TF118-200-Q	Natural	Sterile	96 Tip Hinged Rack	960	5

Pipette Fit Information: Universal fit.

Large orifice tip | Low Adhesion | Tip orifice inside diameter is 0.059 inches (1.50 mm) | Purple rack

Volume: 100-1000 µl Filtered Large Orifice



Cat. No.	Color	Sterility	Package Type	Tips/Unit	Unit/CS
TF112G-1000-Q	Natural	Sterile	96 Tip Hinged Rack	960	5

Pipette Fit Information: Universal fit.

Large orifice tip | Low Adhesion | Extended length | Tips orifice inside diameter is 0.059 inches (1.50 mm) | Graduated at 100, 200, 500, and 1000 µl | Purple rack

Filtered Pipette Tips

Large Orifice



QSP Automated Pipette Tips

Automated Pipette Tips.....page 30

Beckman	page 31
Bio-Tek	page 35
Caliper Zymark.....	page 35
Cetus	page 36
Molecular Devices.....	page 36
PerkinElmer / Packard	page 39
Tecan	page 41
Tomtec / Apricot	page 45
Qiagen / Rosys / Colibri.....	page 46
Velocity11	page 47

Beckman 96-Well Automated Pipette Tips

Fit Information: Beckman Biomek® 2000/1000

Volume: 20 µl



Cat. No.	Color	Sterility	Package Type	Tips/Unit	Unit/CS
141-96R	Natural	Non sterile	96 Tip Rack	960	5
141-96RS	Natural	Sterile	96 Tip Rack	960	5

Volume: 20 µl Filtered



Cat. No.	Color	Sterility	Package Type	Tips/Unit	Unit/CS
LMF141-96RS-20	Natural	Sterile	96 Tip Rack	960	5

Volume: 250 µl



Cat. No.	Color	Sterility	Package Type	Tips/Unit	Unit/CS
142-96R	Natural	Non sterile	96 Tip Rack	960	5
142-96RS	Natural	Sterile	96 Tip Rack	960	5

Volume: 175 µl Filtered



Cat. No.	Color	Sterility	Package Type	Tips/Unit	Unit/CS
LMF142-96RS-180	Natural	Sterile	96 Tip Rack	960	5

Fit Information: Beckman Biomek FX/NX, Span-8, 3000 and Multimek™ AP96

Volume: 10 µl



Cat. No.	Color	Sterility	Package Type	Tips/Unit	Unit/CS
140-96XR	Natural	Non sterile	96 Tip Rack	960	5
140-96XRS	Natural	Sterile	96 Tip Rack	960	5

Volume: 10 µl Filtered



Cat. No.	Color	Sterility	Package Type	Tips/Unit	Unit/CS
LMF140-96XRS-10	Natural	Sterile	96 Tip Rack	960	5

Volume: 20 µl



Cat. No.	Color	Sterility	Package Type	Tips/Unit	Unit/CS
143-96XR	Natural	Non sterile	96 Tip Rack	960	5
143-96XRS	Natural	Sterile	96 Tip Rack	960	5
BLK143-96XR	Black	Non sterile	96 Tip Rack	960	5
BLK143-96XRS	Black	Sterile	96 Tip Rack	960	5

Volume: 20 µl Filtered



Cat. No.	Color	Sterility	Package Type	Tips/Unit	Unit/CS
LMF143-96XRS-20	Natural	Sterile	96 Tip Rack	960	5
BLKF143-96XRS20	Black	Sterile	96 Tip Rack	960	5

Volume: 50 µl Extended Length

Cat. No.	Color	Sterility	Package Type	Tips/Unit	Unit/CS
146-96XR	Natural	Non sterile	96 Tip Rack	960	5
146-96XRS	Natural	Sterile	96 Tip Rack	960	5
BLK146-96XR	Black	Non sterile	96 Tip Rack	960	5
BLK146-96XRS	Black	Sterile	96Tip Rack	960	5

Volume: 40 µl Filtered Extended Length

Cat. No.	Color	Sterility	Package Type	Tips/Unit	Unit/CS
LMF146-96XRS-40	Natural	Sterile	96 Tip Rack	960	5
BLKF146-96XRS40	Black	Sterile	96 Tip Rack	960	5

Volume: 250 µl

Cat. No.	Color	Sterility	Package Type	Tips/Unit	Unit/CS
144-96XR	Natural	Non sterile	96 Tip Rack	960	5
144-96XRS	Natural	Sterile	96 Tip Rack	960	5
BLK144-96XR	Black	Non sterile	96 Tip Rack	960	5
BLK144-96XRS	Black	Sterile	96 Tip Rack	960	5

Volume: 175 µl Filtered

Cat. No.	Color	Sterility	Package Type	Tips/Unit	Unit/CS
LMF144-96XRS180	Natural	Sterile	96 Tip Rack	960	5
BLKF14496XRS180	Black	Sterile	96 Tip Rack	960	5

Beckman 96-Well Multimek Type II Automated Pipette Tips

Fit Information: Multimek Type II

These tips are compatible with other liquid handling workstations.

Please refer to page 37 for compatible tips.

Beckman 384-Well Automated Pipette Tips

Fit Information: Beckman Biomek FX/NX with 384 head.

Volume: 30 µl



Cat. No.	Color	Sterility	Package Type	Tips/Unit	Unit/CS
083-384R	Clear	Non sterile	384 Tip Rack	3840	5
083-384RS	Clear	Sterile	384 Tip Rack	3840	5

Volume: 25 µl Filtered



Cat. No.	Color	Sterility	Package Type	Tips/Unit	Unit/CS
LMF083-384	Clear	Sterile	384 Tip Rack	3840	5

Volume: 50 µl Extended Length



Cat. No.	Color	Sterility	Package Type	Tips/Unit	Unit/CS
087-384R	Clear	Non sterile	384 Tip Rack	3840	5
087-384RS	Clear	Sterile	384 Tip Rack	3840	5

Volume: 40 µl Filtered



Cat. No.	Color	Sterility	Package Type	Tips/Unit	Unit/CS
LMF087-384	Clear	Sterile	384 Tip Rack	3840	5

Bio-Tek 96-Well Automated Pipette Tips

Fit Information: Bio-Tek Precision™ and Precision™ XS.

These tips are compatible with other liquid handling workstations.

Please refer to page 43 for compatible tips.

Caliper Zymark 96-Well Automated Pipette Tips

Fit Information: Caliper Zymark RapidPlate®, Presto® Autostacker, SciClone™, Zephyr and Allegro.

Volume: 50 µl



Cat. No.	Color	Sterility	Package Type	Tips/Unit	Unit/CS
163-96R	Natural	Non sterile	96 Tip Rack	960	5
163-96RS	Natural	Sterile	96 Tip Rack	960	5

Volume: 50 µl Filtered



Cat. No.	Color	Sterility	Package Type	Tips/Unit	Unit/CS
LMF163-96RS-50	Natural	Sterile	96 Tip Rack	960	5

Volume: 100 µl



Cat. No.	Color	Sterility	Package Type	Tips/Unit	Unit/CS
159-96R	Natural	Non sterile	96 Tip Rack	960	5
159-96RS	Natural	Sterile	96 Tip Rack	960	5
158-R-960	Natural	Non sterile	Twister 10 Stack*	4800	2
158-R-960S	Natural	Sterile	Twister 10 Stack*	4800	2

* 96 Tips per insert, 10 nested inserts per stack, 5 stacks per unit, 2 units per case.

Volume: 80 µl Filtered



Cat. No.	Color	Sterility	Package Type	Tips/Unit	Unit/CS
LMF159-96RS-80	Natural	Sterile	96 Tip Rack	960	5

Volume: 200 µl

Cat. No.	Color	Sterility	Package Type	Tips/Unit	Unit/CS
160-96R	Natural	Non sterile	96 Tip Rack	960	5
160-96RS	Natural	Sterile	96 Tip Rack	960	5
160-R-960	Natural	Non sterile	Twister 10 Stack*	4800	2
160-R-960S	Natural	Sterile	Twister 10 Stack*	4800	2

*96 Tips per insert, 10 inserts per stack, 5 stacks per unit, 2 units per case.

Volume: 150 µl Filtered

Cat. No.	Color	Sterility	Package Type	Tips/Unit	Unit/CS
LMF160-96RS-150	Natural	Sterile	96 Tip Rack	960	5

Cetus 96-Well Automated Pipette Tips

Fit Information: Cetus Pro\Pette™

Volume: 200 µl

Cat. No.	Color	Sterility	Package Type	Tips/Unit	Unit/CS
151-96R	Natural	Non sterile	96 Tip Rack	960	5
151-96RS	Natural	Sterile	96 Tip Rack	960	5

Molecular Devices 96-Well Automated Pipette Tips

Fit Information: Molecular Devices FlexStation®

Volume: 200 µl

Cat. No.	Color	Sterility	Package Type	Tips/Unit	Unit/CS
1043-04-5MD	Clear	Non sterile	96 Tip Rack	960	1
1043-24-5MD	Black	Non sterile	96 Tip Rack	960	1

Fit Information: Molecular Devices FLIPR® and Beckman Multimek Type II

Volume: 50 µl



Cat. No.	Color	Sterility	Package Type	Tips/Unit	Unit/CS
1043-06-5	Clear	Non sterile	96 Tip Rack	960	1
1043-16-5	Clear	Sterile	96 Tip Rack	960	1

Volume: 30 µl Filtered



Cat. No.	Color	Sterility	Package Type	Tips/Unit	Unit/CS
1043-16-7	Clear	Sterile,	96 Tip Rack	960	1

Volume: 200 µl



Cat. No.	Color	Sterility	Package Type	Tips/Unit	Unit/CS
1043-04-5	Clear	Non sterile	96 Tip Rack	960	1
1043-14-5	Clear	Sterile	96 Tip Rack	960	1

Volume: 140 µl Filtered



Cat. No.	Color	Sterility	Package Type	Tips/Unit	Unit/CS
1043-14-7	Clear	Sterile	96 Tip Rack	960	1

Volume: 200 µl Large Orifice

Cat. No.	Color	Sterility	Package Type	Tips/Unit	Unit/CS
1043-07-5	Clear	Non sterile	96 Tip Rack	960	1
1043-17-5	Clear	Sterile	96 Tip Rack	960	1

Molecular Devices 384-Well Pipette Tips

Fit Information: Molecular Devices FLIPR with 384 Type A/CCS head, PerkinElmer/Packard, PlateTrak[®], MiniTrak[®] and Evolution P3[™] with a 384 well head.

Volume: 30 µl

Cat. No.	Color	Sterility	Package Type	Tips/Unit	Unit/CS
084-384R	Clear	Non sterile	384 Tip Rack	3840	5
084-384RS	Clear	Sterile	384 Tip Rack	3840	5

Volume: 20 µl Filtered

Cat. No.	Color	Sterility	Package Type	Tips/Unit	Unit/CS
LMF084-384	Clear	Sterile	384 Tip Rack	3840	5

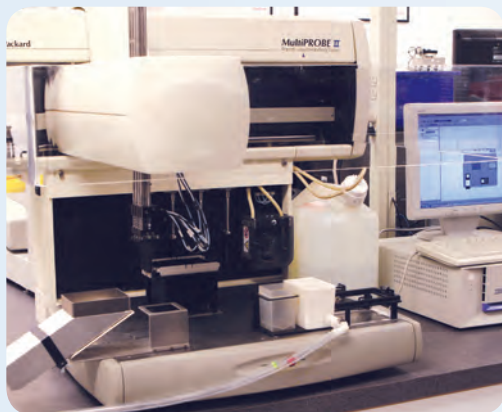
Fit Information: Molecular Devices FLIPR with 384 Type B/Liberty head.

Volume: 30 µl

Cat. No.	Color	Sterility	Package Type	Tips/Unit	Unit/CS
086-384R	Clear	Non sterile	384 Tip Rack	3840	5
086-384RS	Clear	Sterile	384 Tip Rack	3840	5

PerkinElmer/Packard 96-Well Automated Pipette Tips

PerkinElmer/Packard MultiPROBE® II HT and HT EX



Fit Information:

PerkinElmer MultiPROBE II HT and HT EX

These tips are compatible with other liquid handling workstations. Please refer to page 41 for compatible tips.

PerkinElmer/Packard PlateTrak, MiniTrak and Evolution P3

Fit Information: PerkinElmer/Packard PlateTrak, MiniTrak and Evolution P3.

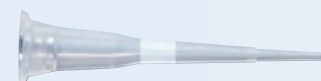


Volume: 20 µl



Cat. No.	Color	Sterility	Package Type	Tips/Unit	Unit/CS
176-96R	Natural	Non sterile	96 Tip Rack	960	5
176-96RS	Natural	Sterile	96 Tip Rack	960	5

Volume: 10 µl Filtered



Cat. No.	Color	Sterility	Package Type	Tips/Unit	Unit/CS
LMF176-96RS-10	Natural	Sterile	96 Tip Rack	960	5

Volume: 50 µl

Cat. No.	Color	Sterility	Package Type	Tips/Unit	Unit/CS
178-96R	Natural	Non sterile	96 Tip Rack	960	5
178-96RS	Natural	Sterile	96 Tip Rack	960	5

Volume: 40 µl Filtered

Cat. No.	Color	Sterility	Package Type	Tips/Unit	Unit/CS
LMF178-96RS-40	Natural	Sterile	96 Tip Rack	960	5

Volume: 235 µl

Cat. No.	Color	Sterility	Package Type	Tips/Unit	Unit/CS
179-96R	Natural	Non sterile	96 Tip Rack	960	5
179-96RS	Natural	Sterile	96 Tip Rack	960	5

Volume: 180 µl Filtered

Cat. No.	Color	Sterility	Package Type	Tips/Unit	Unit/CS
LMF179-96RS-180	Natural	Sterile	96 Tip Rack	960	5

PerkinElmer/Packard 384-Well Automated Pipette Tips

Fit Information: PerkinElmer/Packard PlateTrak, MiniTrack, and Evolution P3 with 384 head.

These tips are compatible with other liquid handling workstations.

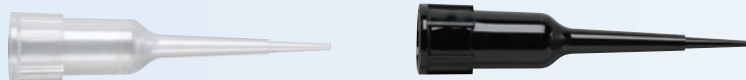
Please refer to page 38 for compatible tips.

Tecan 96-Well Automated Pipette Tips



Fit Information: Tecan Genesis™, Freedom EVO®, MiniPrep, Cavro, and PerkinElmer/Packard MultiPROBE II HT and HT EX

Volume: 20 µl



Cat. No.	Color	Sterility	Package Type	Tips/Unit	Unit/CS
171-96R	Natural	Non sterile	96 Tip Rack	960	5
171-96RS	Natural	Sterile	96 Tip Rack	960	5
BLK-171-96R	Black	Non sterile	96 Tip Rack	960	5
BLK-171-96RS	Black	Sterile	96 Tip Rack	960	5

Volume: 10 µl Filtered



Cat. No.	Color	Sterility	Package Type	Tips/Unit	Unit/CS
LMF171-96RS-10	Natural	Sterile	96 Tip Rack	960	5
BLKF171-96RS-10	Black	Sterile	96 Tip Rack	960	5

Volume: 50 µl

Cat. No.	Color	Sterility	Package Type	Tips/Unit	Unit/CS
172-96R	Natural	Non sterile	96 Tip Rack	960	5
172-96RS	Natural	Sterile	96 Tip Rack	960	5
BLK-172-96R	Black	Non sterile	96 Tip Rack	960	5
BLK-172-96RS	Black	Sterile	96 Tip Rack	960	5

Volume: 50 µl Filtered

Cat. No.	Color	Sterility	Package Type	Tips/Unit	Unit/CS
LMF172-96RS-50	Natural	Sterile	96 Tip Rack	960	5
BLKF172-96RS-50	Black	Sterile	96 Tip Rack	960	5

Volume: 200 µl

Cat. No.	Color	Sterility	Package Type	Tips/Unit	Unit/CS
173-96R	Natural	Non sterile	96 Tip Rack	960	5
173-96RS	Natural	Sterile	96 Tip Rack	960	5
BLK-173-96R	Black	Non sterile	96 Tip Rack	960	5
BLK-173-96RS	Black	Sterile	96 Tip Rack	960	5

Volume: 200 µl Filtered

Cat. No.	Color	Sterility	Package Type	Tips/Unit	Unit/CS
LMF173-96RS-200	Natural	Sterile	96 Tip Rack	960	5
BLKF173-96RS200	Black	Sterile	96 Tip Rack	960	5

Volume: 1000 μ l

Cat. No.	Color	Sterility	Package Type	Tips/Unit	Unit/CS
175-96R	Natural	Non sterile	96 Tip Rack	960	5
175-96RS	Natural	Sterile	96 Tip Rack	960	5
BLK-175-96R	Black	Non sterile	96 Tip Rack	960	5
BLK-175-96RS	Black	Sterile	96 Tip Rack	960	5

Volume: 1000 μ l Filtered

Cat. No.	Color	Sterility	Package Type	Tips/Unit	Unit/CS
LMF175-96RS1000	Natural	Sterile	96 Tip Rack	960	5
BLKF17596RS1000	Black	Sterile	96 Tip Rack	960	5

Fit Information: Tecan Freedom EVO, Aquarius™
and Bio-Tek Precision and Precision XP (non SBS rack)

Volume: 50 μ l

Cat. No.	Color	Sterility	Package Type	Tips/Unit	Unit/CS
163-96R	Natural	Non sterile	96 Tip Rack	960	5
163-96RS	Natural	Sterile	96 Tip Rack	960	5

Volume: 50 μ l Filtered

Cat. No.	Color	Sterility	Package Type	Tips/Unit	Unit/CS
LMF163-96RS-50	Natural	Sterile	96 Tip Rack	960	5

Volume: 100 μ l

Cat. No.	Color	Sterility	Package Type	Tips/Unit	Unit/CS
161-96R	Natural	Non sterile	96 Tip Rack	960	5
161-96RS	Natural	Sterile	96 Tip Rack	960	5

Volume: 100 μ l Filtered

Cat. No.	Color	Sterility	Package Type	Tips/Unit	Unit/CS
LMF161-96RS-100	Natural	Sterile	96 Tip Rack	960	5

Volume: 200 μ l

Cat. No.	Color	Sterility	Package Type	Tips/Unit	Unit/CS
162-96R	Natural	Non sterile	96 Tip Rack	960	5
162-96RS	Natural	Sterile	96 Tip Rack	960	5

Volume: 150 μ l Filtered

Cat. No.	Color	Sterility	Package Type	Tips/Unit	Unit/CS
LMF162-96RS-150	Natural	Sterile	96 Tip Rack	960	5

Tomtec and Apricot Automated Pipette Tips

Fit Information: Tomtec Quadra® 96-well, Quadra 3 Workstations and Apricot Workstations.

Volume: 550 µl



Cat. No.	Color	Sterility	Package Type	Tips/Unit	Unit/CS
1043-60-5	Clear	Non sterile	96 Tip Rack	1920	1
1043-61-5	Clear	Sterile	96 Tip Rack	1920	1

Volume: 250 µl Filtered



Cat. No.	Color	Sterility	Package Type	Tips/Unit	Unit/CS
1043-61-7	Clear	Sterile	96 Tip Rack	1920	1

Qiagen 96-Well Automated Pipette Tips

Fit Information: Qiagen BioRobot® 3000, 8000, 9600, 9604, Rosys and Colibri Workstations

Volume: 300 µl



Cat. No.	Color	Sterility	Package Type	Tips/Unit	Unit/CS
180-96R	Natural	Non sterile	96 Tip Rack	960	5
180-96RS	Natural	Sterile	96 Tip Rack	960	5
BLK-180-96R	Black	Non sterile	96 Tip Rack	960	5
BLK-180-96RS	Black	Sterile	96 Tip Rack	960	5

Volume: 300 µl Filtered

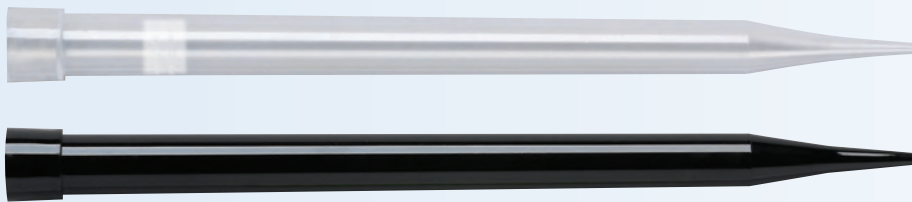


Cat. No.	Color	Sterility	Package Type	Tips/Unit	Unit/CS
LMF180-96RS-300	Natural	Sterile	96 Tip Rack	960	5
BLKF180-96RS300	Black	Sterile	96 Tip Rack	960	5

Volume: 1100 µl



Cat. No.	Color	Sterility	Package Type	Tips/Unit	Unit/CS
181-96R	Natural	Non sterile	96 Tip Rack	960	5
181-96RS	Natural	Sterile	96 Tip Rack	960	5
BLK-181-96R	Black	Non sterile	96 Tip Rack	960	5
BLK-181-96RS	Black	Sterile	96 Tip Rack	960	5

Volume: 1100 µl Filtered

Cat. No.	Color	Sterility	Package Type	Tips/Unit	Unit/CS
LMF181-96RS1100	Natural	Sterile	96 Tip Rack	960	5
BLKF18196RS1100	Black	Sterile	96 Tip Rack	960	5

Velocity11 384-Well Automated Pipette Tips

Fit Information: VPrep[®] and Bravo[™] Workstations with 384 well head

Volume: 10 µl

Cat. No.	Color	Sterility	Package Type	Tips/Unit	Unit/CS
082-384R	Natural	Non sterile	384 Tip Rack	3840	5
082-384RS	Natural	Sterile	384 Tip Rack	3840	5

Volume: 30 µl

Cat. No.	Color	Sterility	Package Type	Tips/Unit	Unit/CS
088-384R	Natural	Non sterile	384 Tip Rack	3840	5
088-384RS	Natural	Sterile	384 Tip Rack	3840	5

Volume: 50 µl

Cat. No.	Color	Sterility	Package Type	Tips/Unit	Unit/CS
089-384R	Natural	Non sterile	384 Tip Rack	3840	5
089-384RS	Natural	Sterile	384 Tip Rack	3840	5

Volume: 70 µl

Cat. No.	Color	Sterility	Package Type	Tips/Unit	Unit/CS
090-384R	Natural	Non sterile	384 Tip Rack	3840	5
090-384RS	Natural	Sterile	384 Tip Rack	3840	5

Automated Pipette Tips



QSP Microcentrifuge and Microtiter Tubes

Microcentrifuge and Microtiter Tubes..... 50

Graduated Microcentrifuge Tubes	page 51
Locking Lid Microcentrifuge Tubes	page 52
Screw Cap Conical Tubes and Caps	page 53
Screw Cap Free Standing Tubes and Caps	page 55
Screw Caps	page 57
Capless Microcentrifuge Tubes.....	page 58
Specialty Microcentrifuge Tubes	page 59
Microtiter Tubes and Strip Caps	page 60

Graduated Microcentrifuge Tubes

Non sterile microcentrifuge tubes are certified free of RNase/DNase, DNA, and Pyrogens. Sterile microcentrifuge tubes are individually wrapped and are certified free of RNase/DNase, DNA, Pyrogen, Endotoxin, ATP, Bioburden, and PCR Inhibitors. Colors available are *red, blue, green, yellow, orange, violet and amber*. To order colored tubes, add the letter of the color to the end of the catalog number. (i.e. 509-GRD-R, which is a red tube). For mixed colors order 509-GRD-MIXED (includes all colors, except natural and amber).



Volume: 0.6 ml Graduated Microcentrifuge Tube

Cat. No.	Color	Sterility	Package Type	Tubes/Unit	Unit/CS
502-GRD-Q	Natural	Non sterile	Bagged	1,000	10
502-GRDS	Natural	Sterile	Individually Wrapped	500	10

Rated at: 30,000 x G

Frosted writing area on tube and cap | Graduated at 0.2, 0.4 and 0.6 ml | For mixed colors order 502-GRD-MIXED (includes all colors, except natural and amber) | Sterile tubes available in natural only, no colors



Volume: 1.5 ml Graduated Microcentrifuge Tube

Cat. No.	Color	Sterility	Package Type	Tubes/Unit	Unit/CS
509-GRD-Q	Natural	Non sterile	Bagged	500	10
509-GRDS	Natural	Sterile	Individually Wrapped	250	10

Rated at: 26,000 x G

Frosted writing area on tube and cap | Graduated at 0.1, 0.5, 1.0 and 1.5 ml | For mixed colors order 509-GRD-MIXED (includes all colors, except natural and amber) | Sterile tubes available in natural only, no colors



Volume: 2.0 ml Graduated Microcentrifuge Tube

Cat. No.	Color	Sterility	Package Type	Tubes/Unit	Unit/CS
508-GRD-Q	Natural	Non sterile	Bagged	500	10
508-GRDS	Natural	Sterile	Individually Wrapped	250	10

Rated at: 25,000 x G

Frosted writing area on tube and cap | Graduated at 0.5, 1.0, 1.5 and 2.0 ml | For mixed colors order 508-GRD-MIXED (includes all colors, except natural and amber) | Sterile tubes available in natural only, no colors

Locking Lid Microcentrifuge Tubes

Offering extra sample security while maintaining an easy to open cap, the QSP Locking Lid Microcentrifuge tubes provide a superior lock for safe and convenient centrifugation, boiling, freezing, incubation, or sample storage. The cap snaps closed and the lock easily slips into place with a simple one-hand operation. The larger round cap design proves less stressful to the thumb and the smooth surface reduces the possibility of ripped or torn gloves. Colors available are red, blue, green, yellow, orange, and violet. To order colored tubes, add the letter of the color to the end of the catalog number. (i.e. L-510-GRD-R, which is a red tube). For mixed colors order L-510-GRD-MIXED (includes all colors, except natural).



Volume: 0.6 ml Graduated Microcentrifuge Tube with Locking Cap

Cat. No.	Color	Sterility	Package Type	Tubes/Unit	Unit/CS
L-502-GRD	Natural	Non sterile	Bagged	1,000	10
L-502-GRDS	Natural	Sterile	Individually Wrapped	500	10

Rated at: 30,000 x G

Frosted writing area on tube and cap | Graduated at 0.2, 0.4, 0.6 ml | For mixed colors order L-502-GRD-MIXED (includes all colors, except natural and amber) | Sterile tubes available in natural only, no colors



Volume: 1.5 ml Graduated Microcentrifuge Tube with Locking Cap

Cat. No.	Color	Sterility	Package Type	Tubes/Unit	Unit/CS
L-510-GRD-Q	Natural	Non sterile	Bagged	500	10
L-510-GRDS	Natural	Sterile	Individually Wrapped	250	10

Rated at: 24,000 x G

Frosted writing area on tube and cap | Graduated at 0.1, 0.5, 1.0 and 1.5 ml | For mixed colors order L-510-GRD-MIXED (includes all colors, except natural) | Sterile tubes available in natural only, no colors



Volume: 2.0 ml Graduated Microcentrifuge Tube with Locking Cap

Cat. No.	Color	Sterility	Package Type	Tubes/Unit	Unit/CS
L-508-GRD	Natural	Non sterile	Bagged	500	10
L-508-GRDS	Natural	Sterile	Individually Wrapped	250	10

Rated at: 24,000 x G

Frosted writing area on tube and cap | Graduated at 0.5, 1.0, 1.5 and 2.0 ml | For mixed colors order L-508-GRD-MIXED (includes all colors, except natural) | Sterile tubes available in natural only, no colors

Screw Cap Conical Tubes and Caps



Volume: 0.5 ml Conical Tube and Cap

Cat. No.	Color	Sterility	Package Type	Tubes/Unit	Unit/CS
511*	Natural	Non sterile	Bagged Tube Only, No Cap	500	10
TC-512	Natural	Non sterile	Bagged, Tube and Attached Tethered Cap with O-Ring	500	10
512	Natural	Non sterile	Bagged, Tube and Unattached Cap with O-Ring	500	10
512-S	Natural	Sterile	Bagged, Tube and Attached Cap with O-Ring	500	5
TC-512-S	Natural	Sterile	Bagged, Tube and Attached Tethered Cap with O-Ring	500	5

Rated at: 25,000 x G

Frosted writing area on tube and cap | In a sterile pack, tubes are divided into 10 individual bags with 50 tubes each | Caps are screwed onto tubes in a sterile pack | *Tube also available in Amber 511-A | Amber caps sold separately



Volume: 1.5 ml Conical Tube and Cap

Cat. No.	Color	Sterility	Package Type	Tubes/Unit	Unit/CS
514*	Natural	Non sterile	Bagged Tube only, no Cap	500	10
TC-515	Natural	Non sterile	Bagged, Tube and Attached Tethered Cap with O-Ring	500	10
515	Natural	Non sterile	Bagged, Tube and Unattached Cap with O-Ring	500	10
515-S	Natural	Sterile	Bagged, Tube and Attached Cap with O-Ring	500	5
TC-515-S	Natural	Sterile	Bagged, Tube and Attached Tethered Cap with O-Ring	500	5

Rated at: 20,000 x G

Frosted writing area on tube and cap | In a sterile pack, tubes are divided into 10 individual bags with 50 tubes each | Caps are screwed onto tubes in a sterile pack | Tube also available in Amber 514-A | Amber caps sold separately



Volume: 2.0 ml Conical Tube and Cap

Cat. No.	Color	Sterility	Package Type	Tubes/Unit	Unit/CS
521	Natural	Non sterile	Bagged Tube Only, No Cap	500	10
TC-522	Natural	Non sterile	Bagged, Tube and Attached Tethered Cap with O-Ring	500	10
522	Natural	Non sterile	Bagged, Tube and Unattached Cap with O-Ring	500	10
522-S	Natural	Sterile	Bagged, Tube and Attached Cap with O-Ring	500	5
TC-522-S	Natural	Sterile	Bagged, Tube and Attached Tethered Cap with O-Ring	500	5

Rated at: 20,000 x G

Frosted writing area on tube and cap | In a sterile pack, tubes are divided into 10 individual bags with 50 tubes each | Caps are screwed onto tubes in a sterile pack | Tube also available in Amber 521-A | Amber caps sold separately

Screw Cap Free Standing Conical Tubes and Caps



Volume: 0.5 ml Free Standing Conical Tube and Cap

Cat. No.	Color	Sterility	Package Type	Tubes/Unit	Unit/CS
516*	Natural	Non sterile	Bagged Tube Only, No Cap	500	10
TC-517	Natural	Non sterile	Bagged, Tube and Attached Tethered Cap with O-Ring	500	10
517	Natural	Non sterile	Bagged, Tube and Unattached Cap with O-Ring	500	10
517-S	Natural	Sterile	Bagged, Tube and Attached Cap with O-Ring	500	5
TC-517-S	Natural	Sterile	Bagged, Tube and Attached Tethered Cap with O-Ring	500	5

Rated at: 30,000 x G

Frosted writing area on tube and cap | In a sterile pack, tubes are divided into 10 individual bags with 50 tubes each | Caps are screwed onto tubes in a sterile pack | *Tube also available in Amber 516-A | Amber caps sold separately



Volume: 1.5 ml Free Standing Conical Tube and Cap

Cat. No.	Color	Sterility	Package Type	Tubes/Unit	Unit/CS
528*	Natural	Non sterile	Bagged Tube only, no Cap	500	10
TC-529	Natural	Non sterile	Bagged, Tube and Attached Tethered Cap with O-Ring	500	10
529	Natural	Non sterile	Bagged, Tube and Unattached Cap with O-Ring	500	10
529-S	Natural	Sterile	Bagged, Tube and Attached Cap with O-Ring	500	5
TC-529-S	Natural	Sterile	Bagged, Tube and Attached Tethered Cap with O-Ring	500	5

Rated at: 18,000 x G

Frosted writing area on tube and cap | In a sterile pack, tubes are divided into 10 individual bags with 50 tubes each | Caps are screwed onto tubes in a sterile pack | *Tube available in Amber 528-A | Caps sold separately



Volume: 2.0 ml Free Standing Conical Tubes and Caps

Cat. No.	Color	Sterility	Package Type	Tubes/Unit	Unit/CS
519-GRD*	Natural	Non sterile	Bagged Tube Only, No Cap	500	10
TC-520-GRD	Natural	Non sterile	Bagged, Tube and Attached Tethered Cap with O-Ring	500	10
520-GRD	Natural	Non sterile	Bagged, Tube and Unattached Cap with O-Ring	500	10
520-GRDS	Natural	Sterile	Bagged, Tube and Attached Cap with O-Ring	500	5
TC-520-GRDS	Natural	Sterile	Bagged, Tube and Attached Tethered Cap with O-Ring	500	5

Rated at: 18,000 x G

Frosted writing area on tube and cap | Graduated at 0.25, 0.5, 0.75, 1.0, and 1.25 ml | In a sterile pack, tubes are divided into 10 individual bags with 50 tubes each | Caps are screwed onto tubes in a sterile pack | *Tube also available in Amber 519-GRD-A | Amber caps sold separately

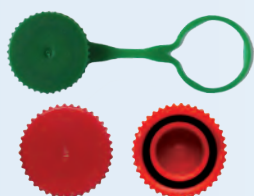
Screw Caps



Screw Caps for Microcentrifuge Tubes without O-Ring

Cat. No.	Color	Sterility	Package Type	Caps/Unit	Unit/CS
524	Natural	Non sterile	Bagged, Screw Cap for Microcentrifuge Tube without O-Ring	500	10
TC-524	Natural	Non sterile	Bagged, Tethered Screw Cap for Microcentrifuge Tube without O-Ring	500	10

Frosted writing area on cap | Colors available are red, blue, green, yellow, orange, violet and amber | To order colored caps, add the letter of the color to the end of the catalog number (i.e. 524-R, which is a red cap) | For mixed colors order 524-mixed or TC-524-mixed (includes all colors, except natural and amber)



Screw Caps for Microcentrifuge Tubes with O-Ring

Cat. No.	Color	Sterility	Package Type	Caps/Unit	Unit/CS
525	Natural	Non sterile	Bagged, Screw Cap for Microcentrifuge Tube without O-Ring	500	10
TC-525	Natural	Non sterile	Bagged, Tethered Screw Cap for Microcentrifuge Tube without O-Ring	500	10

Frosted writing area on cap | Colors available are red, blue, green, yellow, orange, violet and amber | To order colored caps, add the letter of the color to the end of the catalog number (i.e. 525-R, which is a red cap) | For mixed colors order 525-mixed or TC-525-mixed (includes all colors, except natural and amber) | O-ring is manufactured out of sulfur-cured ethylene propylene dimonomere compound | Can handle temperature range down to -54 °C

Capless Microcentrifuge Tubes



Volume: 0.6 ml Capless Graduated Microcentrifuge Tube

Cat. No.	Color	Sterility	Package Type	Tubes/Unit	Unit/CS
NC-502-GRD	Natural	Non sterile	Bagged	1,000	10

Rated at: 30,000 x G

Frosted writing area on tube | Graduated at 0.2, 0.4 and 0.6 ml



Volume: 1.5 ml Capless Graduated Microcentrifuge Tube

Cat. No.	Color	Sterility	Package Type	Tubes/Unit	Unit/CS
NC-509-GRD	Natural	Non sterile	Bagged	1,000	10

Rated at: 26,000 x G

Frosted writing area on tube | Graduated at 0.1, 0.5, 1.0 and 1.5 ml



Volume: 2.0 ml Capless Graduated Microcentrifuge Tube

Cat. No.	Color	Sterility	Package Type	Tubes/Unit	Unit/CS
NC-508-GRD	Natural	Non sterile	Bagged	1,000	10

Rated at: 25,000 x G

Frosted writing area on tube | Graduated at 0.5, 1.0, 1.5, and 2.0 ml



Plug Closure for 1.5 ml and 2.0 ml Capless Tubes

Cat. No.	Color	Sterility	Package Type	Tubes/Unit	Unit/CS
506	White	Non sterile	Bagged	1,000	5

Made from non autoclavable, low density polyethylene | Fits on 1.5 and 2.0 ml capless tubes

Specialty Microcentrifuge Tubes



Volume: 0.4 ml Microcentrifuge Tube with Cap

Cat. No.	Color	Sterility	Package Type	Tubes/Unit	Unit/CS
500	Natural	Non sterile	Bagged	1,000	10

Made from non autoclavable, low density polyethylene | LDPE is soft and easily cut to remove pellets



Volume: 0.25 ml Microcentrifuge Tube with Cap

Cat. No.	Color	Sterility	Package Type	Caps/Unit	Unit/CS
503	Natural	Non sterile	Bagged	1,000	10

Rated at: 30,000 x G

Made from Polypropylene



Volume: 0.25 ml Microcentrifuge Tube with Cap

Cat. No.	Color	Sterility	Package Type	Caps/Unit	Unit/CS
504	Natural	Non sterile	Bagged	1,000	10

Rated at: 28,000 x G

Made from non autoclavable, low density polyethylene | LDPE is soft and easily cut to remove pellets

Microtiter Tubes

Microtiter Tubes (1.2 ml) can be autoclaved, sealed and frozen for storage and offer additional volume capacity for sample dilution and/or mixing prior to transfer into microtiter plates. Ideal for a wide variety of laboratory procedures, such as HTLV-III testing, RIA, EIA, PCR, pharmaceutical quality control, blood bank sample freezer storage, transport of specimens and reagents. Manufactured of superior grade polypropylene, fully autoclavable, and can be frozen to - 80 °C.

Plug Strips (polyethylene LDPE) seal tightly for storage. With eight plugs per strip, they may be used with rows of tubes or easily cut apart for individual samples. The plug strips are available pre-sterilized as the material will not withstand autoclaving.



Robotic Workstation-Compatible Racks are specifically designed with the 96-well format necessary for robotic workstations and other dilutors and dispensers. The one directional lid design and rack along with the covers' alphanumeric molded grids provide easy sample identification. Internally supported, the tubes remain in a straight and upright position and the condensation rings on the inside of the cover minimize cross contamination.

Tray Packs provide an economical alternative when a robotic compatible rack is not needed. The compact tray pack features a snug, smooth fitting cover which protects contents and enables stacking for compact storage (5,800 samples/ft³).



Volume: 1.2 ml Non Frosted Microtiter Tubes

Cat. No.	Color	Sterility	Package Type	Tubes/Unit	Unit/CS
845	Natural	Non sterile	Bagged	1,000	10
845-TP	Natural	Non sterile	Tray Pack	960	5
845-TPS	Natural	Sterile	Tray Pack	960	5
RC-845-TP	Natural	Non sterile	Robotic Rack	960	5
RC-845-TPS	Natural	Sterile	Robotic Rack	960	5

Microtiter Tube Plug Strip Caps



Cat. No.	Color	Sterility	Package Type	Caps/Unit	Unit/CS
847	Natural	Non sterile	Bagged	960	5
847-S	Natural	Sterile	Bagged	960	5

Made from non autoclavable, low density polyethylene | 10 bags of 12, 8 strip caps

Microcentrifuge & Microtiter Tubes



PCR Tubes

PCR Tubes 62

Thin Wall PCR Tubes and Caps page 63

Thin Wall Thermal Cycler Plate page 65

QSP PCR Tubes

All tubes and caps are certified RNase/DNase, DNA, and Pyrogen free. Colors available are red, blue, green, yellow, orange and violet. To order colored tubes and caps, add the letter of the color to the end of the catalog number (i.e. 430-R, which is a red tube).

Thin Wall PCR Tubes



Volume: 0.2 ml Thin Wall PCR Tube with Dome Cap

Cat. No.	Color	Sterility	Package Type	Tubes/Unit	Unit/CS
430	Natural	Non sterile	Bagged	1,000	5

For mixed colors order 430-MIXED (includes all colors, except natural)



Volume: 0.2 ml Thin Wall PCR Tube with Flat Cap

Cat. No.	Color	Sterility	Package Type	Tubes/Unit	Unit/CS
431	Natural	Non sterile	Bagged	1,000	5

For mixed colors order 431-MIXED (includes all colors, except natural)



Volume: 0.2 ml Capless Thin Wall PCR Tube

Cat. No.	Color	Sterility	Package Type	Tubes/Unit	Unit/CS
432	Natural	Non sterile	Bagged	1,000	5

Available in natural only



Volume: 0.6 ml Thin Wall PCR Tube with Flat Cap

Cat. No.	Color	Sterility	Package Type	Tubes/Unit	Unit/CS
445	Natural	Non sterile	Bagged	1,000	10

For mixed colors order 445-MIXED (includes all colors, except natural)

Volume: 8-Strip of 0.2 ml Thin Wall PCR Tube with Dome Cap



Cat. No.	Color	Sterility	Package Type	Unit	Unit/CS
435440	Natural	Non sterile	Bagged	960	5

120 strips of 8 tubes and caps | Alphanumeric markings for sample identification | For mixed colors order 435440-M (includes all colors, except natural) | To order colored strip tubes and caps, add the letter of the color to the catalog number (i.e. 435440-R which are red strip tubes and caps).

Volume: 12-Strip of 0.2 ml Thin Wall PCR Tubes with Dome Caps

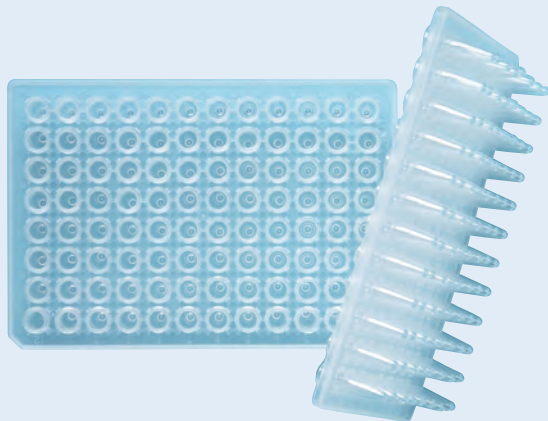


Cat. No.	Color	Sterility	Package Type	Unit	Unit/CS
437442	Natural	Non sterile	Bagged	960	5

80 strips of 12 tubes and caps | Alphanumeric markings for sample identification | Available in natural only

Thin Wall Thermo Cycler Plate

Volume: 0.2 ml 96 Well Thin Wall Thermo Cycler Plates



Cat. No.	Color	Sterility	Package Type	Unit	Unit/CS
460-96	Natural	Non sterile	Bagged	10	5
440	Natural	Non sterile	Bagged	960	5

Alphanumeric markings for sample identification | Use 8-strip caps to seal the plate catalog number 440



Clinical Products

Clinical Products 66

Transport Tubes	page 67
Culture Tubes.....	page 68
VersaClosure	page 68
SAV-IT Closure.....	page 69
Plug Closure, Flange Caps, and Filter Serum Caps.....	page 70

Transport Tubes



Cap for 5 and 10 ml Transport Tubes

Description	Cat. No.	Color	Sterility	Package Type	Caps/Unit	Unit/CS
Cap	584	Blue	Non sterile	Bulk	2,000	1

Leak proof cap is designed with molded-in sealing ring



Volume: 5 ml Round Bottom Free Standing 16x57 mm Transport Tubes

Description	Cat. No.	Color	Sterility	Package Type	Tubes/Unit	Unit/CS
Tube with Unattached Screw Cap	580-GRD	Natural	Non sterile	Bagged	1,000	1
Tube with Attached Screw Cap	580-GRDS	Natural	Sterile	Bagged	25	20

Graduations at 1.0 ml intervals | Frosted writing area | Leak proof cap is designed with molded-in sealing ring
Made from virgin polypropylene



Volume: 10 ml Round Bottom Free Standing 16x93 mm Transport Tubes

Description	Cat. No.	Color	Sterility	Package Type	Tubes/Unit	Unit/CS
Tube with Unattached Screw Cap	581-GRD	Natural	Non sterile	Bagged	1,000	1
Tube with Attached Screw Cap	581-GRDS	Natural	Sterile	Bagged	25	20

Graduations at 1.0 ml intervals | Frosted writing area | Leak proof cap is designed with molded-in sealing ring
Made from virgin polypropylene

Culture Tubes



5 ml Round Bottom 12x75 mm Culture Tubes

Description	Cat. No.	Color	Sterility	Package Type	Tubes/Unit	Unit/CS
Polypropylene Culture Tube without Cap	A20040PRX	Natural	Non sterile	Bagged	1,000	1
Polystyrene Culture Tube without Cap	A20041PRX	Natural	Non sterile	Bagged	1,000	1
Polypropylene Culture Tube with Attached Cap	A20047PRX	Natural	Non sterile	Bagged	1,000	1
Polystyrene Culture Tube with Attached Cap	A20048PRX	Natural	Non sterile	Bagged	1,000	1

Dual position cap | Adjust for aerobic or anaerobic applications | Cap is the Versa-Closure part A20007

VersaClosure

Uniquely designed to fit inside 16 mm tubes or over the rim of 10 mm, 12 mm, and 13 mm tubes, the VersaClosure will fit most blood collection, glass, or plastic tubes. VersaClosures are an inexpensive way to securely cap samples while helping to eliminate the need to purchase various size caps for the laboratory.

VersaClosure



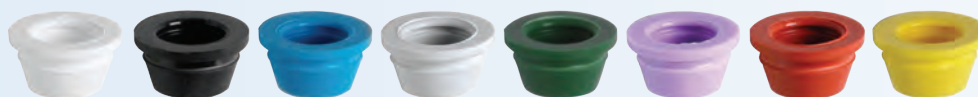
Cat. No.	Color	Sterility	Package Type	Caps/Unit	Unit/CS
A20007	Natural	Non sterile	Bagged	1,000	10
A20008	Black	Non sterile	Bagged	1,000	10
A20009	Blue	Non sterile	Bagged	1,000	10
A20010	Gray	Non sterile	Bagged	1,000	10
A20011	Green	Non sterile	Bagged	1,000	10
A20012	Lavender	Non sterile	Bagged	1,000	10
A20013	Red	Non sterile	Bagged	1,000	10
A20014	Yellow	Non sterile	Bagged	1,000	10

Made from non autoclavable, low density polyethylene

SAV-IT Closure

Made of a proprietary plastic blend, the SAV-IT Closures provide a cap that can be pierced for direct tube sampling while maintaining a secure seal and the closures will fit virtually all standard tubes, including evacuated blood drawing tubes, glass, and plastic test tubes. In addition, they are available in two sizes 12/13 mm and 16 mm and are ideal with instrument tubes and sample cups. The 12/13 mm size will fit snugly inside 12 mm and 13 mm tubes and over the top of 10 mm pediatric size test tubes. The 16 mm size can be inserted inside of most tubes or over the rim of most 12 mm and 13 mm tubes.

SAV-IT 12/13 mm Closures



Cat. No.	Color	Sterility	Package Type	Caps/Unit	Unit/CS
A21071	White	Non sterile	Bagged	1,000	10
A21065	Black	Non sterile	Bagged	1,000	10
A21066	Blue	Non sterile	Bagged	1,000	10
A21067	Gray	Non sterile	Bagged	1,000	10
A21068	Green	Non sterile	Bagged	1,000	10
A21069	Lavender	Non sterile	Bagged	1,000	10
A21070	Red	Non sterile	Bagged	1,000	10
A21072	Yellow	Non sterile	Bagged	1,000	10

Made from non autoclavable elastomer co-polymer

SAV-IT 16 mm Closures



Cat. No.	Color	Sterility	Package Type	Caps/Unit	Unit/CS
A21079	White	Non sterile	Bagged	1,000	10
A21073	Black	Non sterile	Bagged	1,000	10
A21074	Blue	Non sterile	Bagged	1,000	10
A21075	Gray	Non sterile	Bagged	1,000	10
A21076	Green	Non sterile	Bagged	1,000	10
A21077	Lavender	Non sterile	Bagged	1,000	10
A21078	Red	Non sterile	Bagged	1,000	10
A21080	Yellow	Non sterile	Bagged	1,000	10

Made from non autoclavable elastomer co-polymer

Plug Closure, Flange Cap and Filter Serum Caps

Plug Closures are a snug fitting, inexpensive cap for most 12 mm culture tubes.

Flange Caps offer the most secure seal and fits on 12 and 13 mm tubes. The soft double flange prevents splitting and cracking of polystyrene tubes.

Filter Serum Cap is for use with blood serum filters. The stepped design permits the same cap to fit on the inside of unflared 10, 12, 13 and 16 mm models to provide positive seal for serum storage or transport. In addition, the caps allow closed systems with filter in primary collection tube and 1-size step design fits most serum filters for a positive seal.

Plug Closures for 5 ml 12x75 mm Culture Tubes



Cat. No.	Color	Sterility	Package Type	Caps/Unit	Unit/CS
540	White	Non sterile	Bagged	1,000	5
540-B	Blue	Non sterile	Bagged	1,000	5
540-G	Green	Non sterile	Bagged	1,000	5
540-N	Natural	Non sterile	Bagged	1,000	5
540-R	Red	Non sterile	Bagged	1,000	5
540-Y	Yellow	Non sterile	Bagged	1,000	5

Made from autoclavable, low density polyethylene



Flange Caps for 12/13 mm Test and Culture Tubes

Cat. No.	Color	Sterility	Package Type	Caps/Unit	Unit/CS
A20044PRX	Natural	Non sterile	Bagged	1,000	10

Made from non autoclavable, low density polyethylene | Excellent fit with polystyrene tubes



Filter Serum Caps

Cat. No.	Color	Sterility	Package Type	Caps/Unit	Unit/CS
A11004	White	Non sterile	Bagged	1,000	10

Clinical Products



Thermo Fisher Scientific

9389 Waples Street | San Diego, CA 92121-3903 USA

Asia: email: infoapac@qsptips.com

Latin America: email: infolamer@qsptips.com

Europe : Tel: 800.995.2787 | email: infoeu@qsptips.com

North America: Tel: 800.995.2787 | email: info@qsptips.com

www.qsptips.com

© 2010 Thermo Fisher Scientific Inc. All rights reserved. "Apricot" (Apricot Designs, Inc.); "Beckman" (Beckman Coulter); "Bio-Tek" (Bio-Tek Instruments); "Cetus" (Novartis Vaccines & Diagnostics); "Colibri" (Colibri Robotics, Inc.); "Molecular Devices" (MDS Analytical Technologies); "PerkinElmer" (PerkinElmer); "Tecan" (Tecan Group); "Tomtec" (Tomtec Inc.); "Qiagen" and "Rosys" (Qiagen GmbH); "Velocity11" (Velocity11, part of Agilent); "Zymark" (Sotex Corporation) all other trademarks owned by Thermo Fisher Scientific or its affiliates. Specifications, terms and pricing are subject to change. Not all products are available in all countries. Please consult your local sales representative for details.